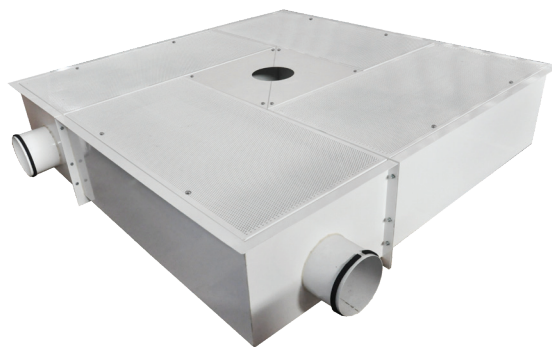


CRU II - Operating Theatre Ceiling Module

Product Overview

- Modular design, easy assembly and installation at site
- Designed for operating theatre, providing laminar airflow
- Rust free - Galvanised steel completed with epoxy powder coated
- Room side replaceable HEPA filters
- Airtight construction
- Perforated diffuser completed with epoxy powder coated
- Sample port available
- Airtight surgical light path
- Unidirectional airflow



Filter Specification

EN1822	H13, H14
ISO 29463	ISO 35 H, ISO 45 H
Filter Depth (mm)	69
Media Type	eFRM
Frame Material	Aluminium
Separator Style	Hot Melt
Gasket Material (Standard)	PU
Gasket Material (Optional)	Neoprene, EPDM
Gasket Position	Upstream
Faceguard Position	Both Sides
Antimicrobial Available	No
Recommended Final Resistance	500 Pa
Max Operating Temperature	70°C
Air Filtration Certificate	UL 900

Housing Specification

Housing Depth (mm)	400
Housing Material	GI Finished with Epoxy Coated
Supply Air Grille	Perforated
Supply Air Grille Material	GI Finished with Epoxy Coated
Inlet Collar (mm)	200
Inlet Diffuser	Prefixed Diffusion Plate
Special Size Available	Yes

Housing Information

Part Number	No. of Module	Actual Size mm (H x W x D)	Rated Airflow (CMH)		
			at 0.25 m/s	at .30 m/s	at 0.45 m/s
M154-514814-1001PN	4	1880 x 1880 x 400	2,339	2,806	4,209
M154-514814-1002PN	2 + 4	1880 x 2480 x 400	3,165	3,798	5,697
M154-514814-1003PN	2 + 4	2480 x 2480 x 400	4,334	5,201	7,802
M154-514814-1004PN	4 + 4	3080 x 3080 x 400	7,016	8,419	12,628

Filter Information

Part Number	Actual Size mm (H x W x D)	Required Quantity	Filter Class	Rated Initial Resistance (Pa)
CRU-II 1880 x 1880 x 400				
M5752-4413-298	550 x 1150 x 69	4	H14	80
CRU-II 1880 x 2480 x 400				
M5752-4413-2878	550 x 850 x 69	2	H14	80
M5752-4413-298	550 x 1150 x 69	4		
CRU-II 2480 x 2480 x 400				
M5752-4413-2878	550 x 850 x 69	2	H14	80
M5752-4413-3274	850 x 1150 x 69	4		
CRU-II 3080 x 3080 x 400				
M5752-4413-298	550 x 1150 x 69	4	H14	80
M5752-4413-549	1150 x 1150 x 69			

*Other filter classifications are available upon request.